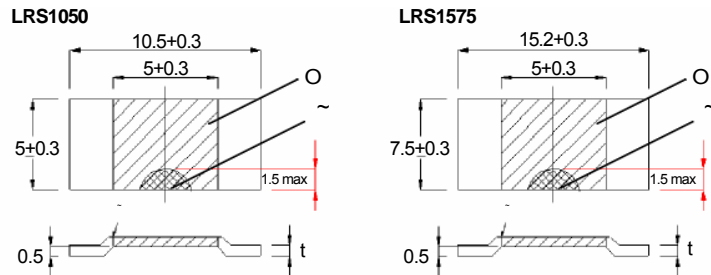
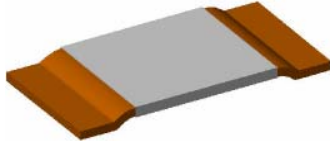


Chip Shunt Resistor LRS Series

Construction



O	Resistance Material	C	Trimming Area	C	Electron Beam Welding
---	---------------------	---	---------------	---	-----------------------

Features

- LRS1050 3W up to 77A at 0.5mS2
- LRS1575 5W up to 100A at 0.5mS2
- Maximum soldering temperatures of up to 350°C / 30 sec. or 250°C / 10 min
- Heavy copper connectors
- Excellent long-term stability and low inductance
- Mounting using re-flow soldering or welding on copper

Applications

- Current Sensors for Hybrid Power Sources
- Frequency Converters
- High Current Automotive

Dimensions

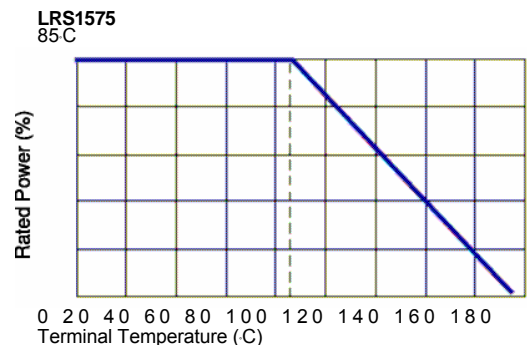
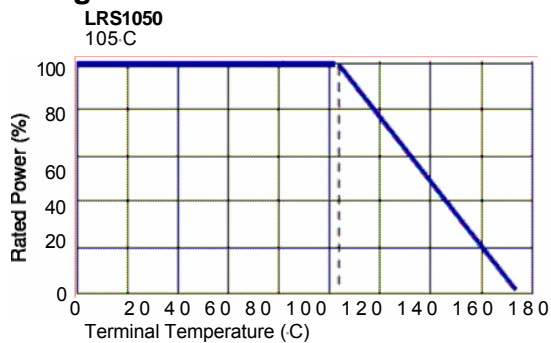
Unit: mm

Type	Size (Inch)	Value	Material	Thickness (t)	Weight (g) (1000pcs)
LRS1050	1050	0.5mS2	Manganin	0.88 mm±0.05	420
LRS1050	1050	1 mS2	Manganin	0.43 mm±0.05	220
LRS1050	1050	2mS2	NiCr alloy	0.64 mm±0.05	310
LRS1050	1050	3mS2	NiCr alloy	0.43 mm±0.05	210
LRS1050	1050	4mS2	NiCr alloy	0.32 mm±0.05	160
LRS1575	1575	0.5mS2	Manganin	0.56 mm±0.05	590
LRS1575	1575	1 mS2	NiCr alloy	0.90 mm±0.05	940
LRS1575	1575	2mS2	NiCr alloy	0.45 mm±0.05	470
LRS1575	1575	3mS2	NiCr alloy	0.30 mm±0.05	320

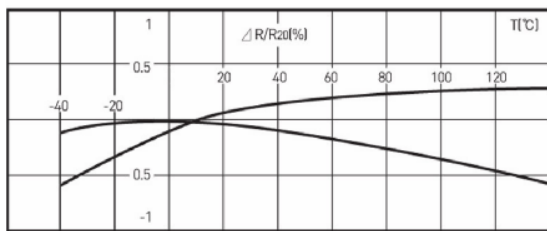
Part Numbering

Product Type	Dimensions	Resistance Tolerance	Packaging Code	TCR (PPM/°C)	Power Rating	Resistance	Marking Code
LRS	1050	F	T	D	R	0M50	N
	1050: 10.5x5.0 1575: 15.2x7.5	F: ±1% G: ± 2% J:	T: Taping Reel B: Bulk	D: ±50 E: ±100	R: 3W D: 5W	0M50: 0.5mS2	M: Manganin N: NiCr alloy

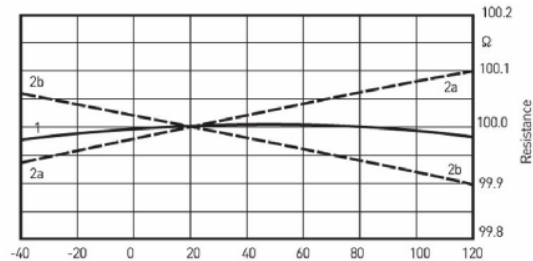
Derating Curve



Resistance Change VS Temperature



Resistance Change Versus Temp.(Managnin)



Resistance Change Versus Temp.(Ni-Dr alloy)

Standard Electrical Specifications

Type	Power Rating	Operating Temp. Range	Resistance Range			TCR (PPM/°C)	Internal Heat Resistance
			±1%	±2%	±5%		
LRS1 050	3W	55°C ~ 170°C	0.5mfl, 1mfl, 2mfl, 3mfl, 4mfl			±50 (20°C to 60°C)	Rthi < 10kW
LRS1 575	5W		0.5mfl, 1mfl, 2mfl, 3mfl			±100 Max.	

Operating Voltage= $\sqrt{P \cdot R}$ or Max. operating voltage listed above, whichever is lower.

Overload Voltage= $2.5 \cdot \sqrt{P \cdot R}$ or Max. overload voltage listed above, whichever is lower.

Environmental Characteristics

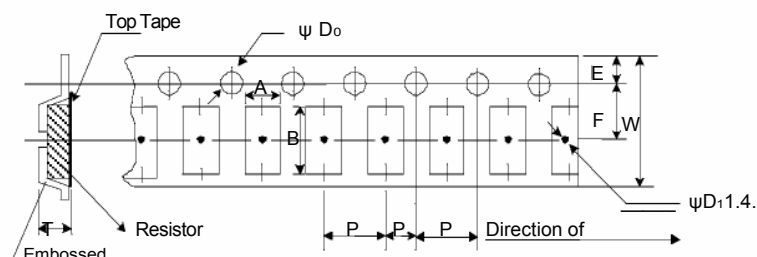
Item	Requirement	Test Method
Short time overload	±0.2%	Rated Power × 5 for 5 seconds
Load Life [Terminal temp. max. 105°C]	±1.0%	Power rating 90 min. "ON", 30 min. "OFF" for 2000 hours
Resistance to Soldering Heat	±0.2%	350°C for 30 seconds or 250°C for 10 min.
Thermal Shock	±0.1%	-65-C, 25 C, 125-C, 25-C, 25 cycles
Moisture Resistance	±0.2%	90 ~ 98%RH, +25°C, +65°C, -10°C, 10 cycles
High Temperature Exposure	±0.2%	140°C for 250 hours
Vibration, High Frequency	±0.2%	15g 10~2000Hz, 36 cycles
Inductance	<3nH	—
Thermal EMF [pV/°C]	2pV/°C max.	0~100°C
Current Noise	±0.01%	MIL-STD-202 Method 308
Voltage Coefficient	Linearity error less than 120 dB	MIL-STD-202 Method 309
Shock	±0.2%	50g's 11ms

Unit: mm

Storage Temperature: 25±3C: Humidity < 80%RH

Packagin

Embossed Plastic Tape Specifications



Type	A	B	W	E	F	P ₀	P ₁	P ₂	ØD ₀	T	Quantity (EA)
LRS1050	5.5	10.8	16	1.75	7.5	4	12	6	1.50	1.2	3000
LRS1575	8.4	15.7	24	1.75	11.5	4	12	6	1.50	1.9	2000